



Beyond in-room security

Global Security Partner

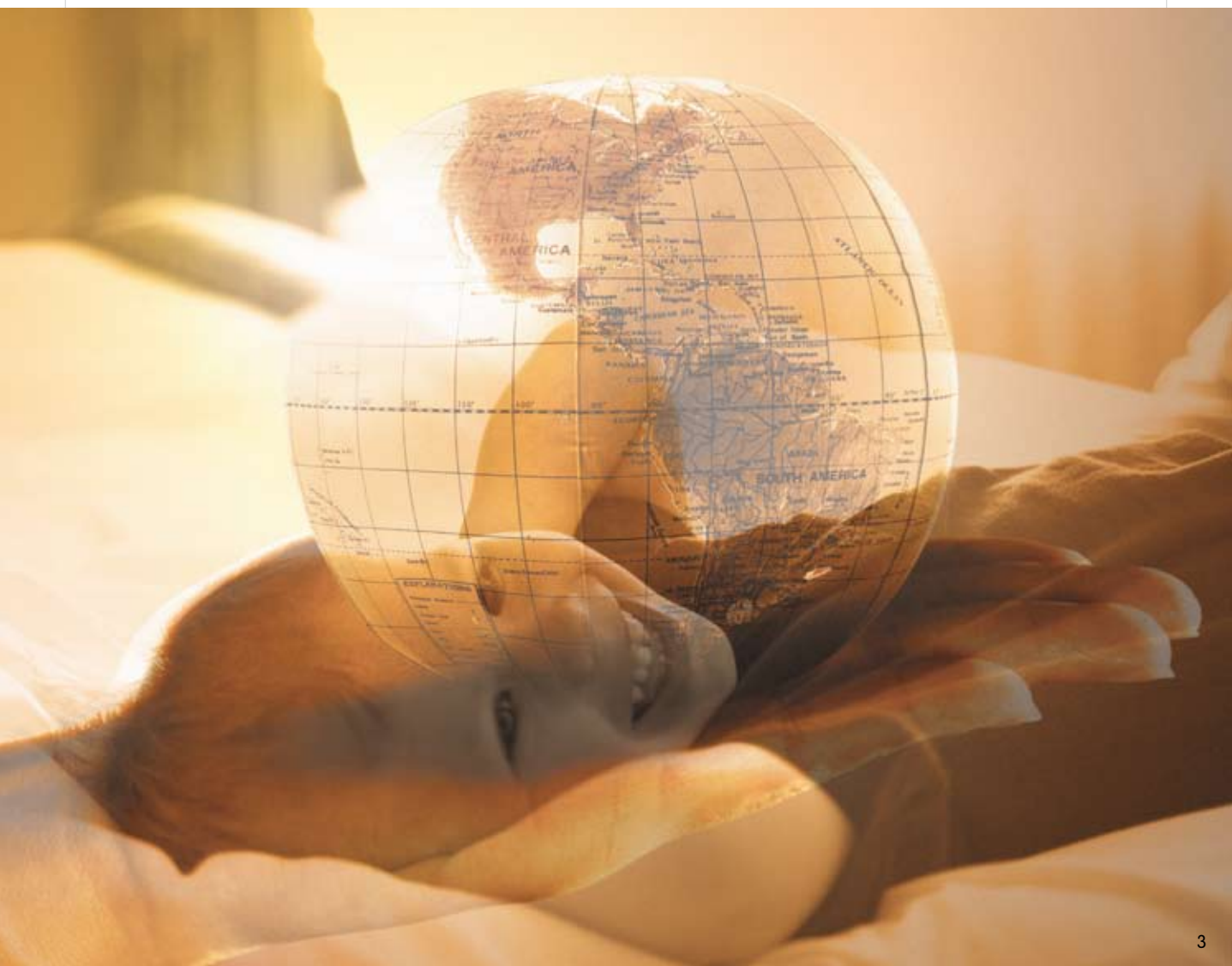
Contents

THE COMPANY VINGCARD ELSAFE	3
WHY IN-ROOM SAFES?	4
» Peace of mind when your guests are away from home	
» Why Elsafe In-room Safes?	
» Security - UL Listed	
» Reliable electronics and ready for future software upgrades	
» Additional Exclusive Security	
» Benefits of a fully-featured Audit Trail	
» Ease of maintenance	
» Service	
ELECTRONIC IN-ROOM SAFES	6
» Infinity by Elsafe	
» SENTINEL II Digital by Elsafe	
» SENTINEL II RFID by Elsafe	
» Xtra by Elsafe	
COMPARISON CHART	11
» Features	
SERVICE UNITS	12
» Safelink	
» PinKey PLUS	
PLACEMENT SOLUTIONS	14
ADDITIONAL INFORMATION	15
» Colors	
» Dimensions	

The company VingCard Elsafe

Since revolutionizing the hospitality industry in 1979 with hotel security solutions, VingCard Elsafe has continued to lead the market by continuously introducing innovations to the industry. VingCard Elsafe is dedicated towards providing electronic security solutions to the hospitality industry and facilities where people sleep away from home, and is recognized as the established worldwide leader within the industry.

We are where you are. With our sales force, covering all corners of the world, we have secured thousands of properties and millions of rooms. VingCard Elsafe is your true global security partner, dedicated to offer you advanced security solutions and peace of mind for both hospitality providers and their guests.



Why in-room safes?

Our experience is your security

Peace of mind when your guests are away from home

Electronic in-room safes contribute to raising the security level in your hotel, increasing your guests' peace of mind.

Why Elsafe In-room Safes?

Not all in-room safes are equal!

Only Elsafe offers a true in-room security solution with a sophisticated blend of advanced security features, technology, convenience and style.

Security - UL Listed

We took our in-room safes to the world's most recognized and respected product testing organization. After enduring rigorous testing procedures by Underwriters Laboratories, Infinity by Elsafe became the first UL-listed in-room safe in the 1037 category for anti-theft devices. This prestigious UL listing is now awarded to both the Infinity and Sentinel models, including physical break-in tests, endurance tests and jarring tests.

How does UL-listing benefit you?

The exclusive UL-1037 listing achieved by Elsafe's in-room safes gives you added assurance that your guests' valuables are receiving the maximum level of protection possible. Not only does this protect your guests' property, it also protects your property's valuable reputation. With Elsafe, your guests can rest easy... and so can you!

Reliable electronics and ready for future software upgrades

- Elsafe in-rooms safes have Flash memory
- Elsafe in-room safes are ready for future software upgrades.



FLASH memory = no codes or information are lost from the safe even if the batteries are empty or if you break the power during battery replacement.



Sentinel and Infinity safes has the power outlet mounted in the door for easy access. For the Xtra safes, the power outlet is mounted at the back wall (Options are EURO, US and UK).

Additional Exclusive Security

Elsafe's revolutionary locking system best resists forcible entry

Specially-designed latch teeth engage both the door and frame if there is any attempt to force the door open.

Anti-tamper labyrinths protect our safes electronics from manipulation

Ingenious design avoids reaching electronics and the safe's mechanism with even the slenderest of probes.

One piece coldpressed door is over 70 % stronger than sheet steel

Infinity and Sentinel's curved door profile and integral dished front are coldpressed in our own factory, making it by far the strongest and most secure door in its class!

Extended solid steel bolt hinges are secure and ultra reliable

The over-sized solid steel hinges are arc-welded permanently to the door, so they are virtually impossible to force out from the door frame.



Benefits of a fully-featured Audit Trail

Knowing the exact time that a safe was opened and the identity of the user is a valuable tool in the event that a guest reports that something was stolen.

Elsafe provides the industry's most complete and detailed audit trail reporting solution identifying all safe operations executed. Reports can be printed out in the guestroom with the guest present to prevent claims of tampering.

Ease of maintenance

Easy battery change

Elsafe helps improving day-to-day operations at the property. Battery change can be securely done from the outside, also when safe is in use by guest and locked, saving time and resources for the hotel.



Service

Service has always been an important part of our offering. Wherever you are located and whatever kind of product you use, we provide support and guidance.

VingCard Elsafe's sales and support organization spans the globe. This allows our valued customers to enjoy the benefits of our worldwide resources, along with the convenience of local service and support.

Committed to a partnership with our customers in the hospitality industry, VingCard Elsafe believes that every customer is a customer for life. Our installation and training programs demonstrate this commitment. Operated on a 24-hour, 365-day basis, technical support is always at hand to answer any questions you may have, so you can get the support you need, when you need it.

VingCard Elsafe offers the world's largest support, service and sales organization for your convenience.

At VingCard Elsafe, We listen!



Electronic in-room safes

Elsafe offers a complete range of in-room safes to suit your need

Infinity by Elsafe

The security safe with everything you need.

With Infinity, Elsafe introduced an entirely new concept in advanced security safe technology to the hospitality industry. Designed for maximum security and flexibility, Infinity's exclusive modular construction allows you to choose from 2 interchangeable access panels, including magstripe and digital options. All utilize the same UL-approved steel body that features sleek, contemporary styling, as well as industry-leading strength and durability.

No other in-room safe on the market is a more secure investment than Infinity electronic hotel safes. The unique modular concept and re-programmable electronics allow you to easily customize features and upgrade to new access technologies simply by replacing the front panel.



Infinity in-room safes are especially designed to maximize security and flexibility.

Standard features:

- UL-1037 Certified for physical security
- Industry-leading audit trail
- 4 or 6 digit guest code and digit display
- Confirmation buzzer
- Contemporary design
- True laptop safe
- Spring-loaded door
- ADA compliant telephone-style keypad

For other features, please see the comparison chart on page 10-11 and page 15 for dimensions.



**Security
Security**



SENTINEL II Digital by Elsafe

Not all safes are created EQUAL

Elsafe goes beyond the ordinary with its New SENTINEL II hotel in-room safe series. We have taken in-room security to a new level and combined it with a functional and trendy design. SENTINEL II electronic in-room safe is not only an in-room safe... It has become contemporary furniture! This new safe series operates on either digital keypad, RFID, and/or RF-online platform.

SENTINEL II Digital by Elsafe hotel in-room safe gives you the highest standard in hotel in-room security with the UL-1037 certification. Our hotel safes set the pace with some of the unique features offered in electronic safes for hotels.

SENTINEL II Digital features:

- ADA compliant telephone keypad.
- 4-Digit guest code.
- Push button to lock door.
- RFID upgradable.

Standard features:

- UL-1037 Certified for physical security
- Industry-leading Audit Trail.
- Easy outside battery change.
- Spring loaded door.
- True laptop safe
- Unique modular construction for easy upgradeability.

For other features, please see the comparison chart on page 10-11 and page 15 for dimensions.





SENTINEL II RFID by Elsafe

Not all safes are created EQUAL

SENTINEL II RFID by Elsafe hotel in-room safe is a new, stylish electronic safe that operates with the guests' unique RFID room key.



Our safe technology works in tandem with the leading Signature RFID contact less electronic lock from VingCard. Thanks to VingCard's exclusive anti-cloning technology, SENTINEL II RFID/NFC can only be opened with the designated RFID guest key or its "NCF"-compatible cell phone.



SENTINEL II RFID features:

- Compatible with Signature RFID by VingCard electronic lock, thus operating the same RFID guest room key.
- 13,56MHz technology
- Compatible with the following standards:
 - ISO 14.443 A (MIFARE)
 - ISO 14.443 B
 - ISO 15.693
- Compatible with Near Field Communication (NFC) standards.



www.nfc-forum.org

Standard features:

- Industry-leading Audit Trail.
- Easy outside battery change.
- Spring loaded door.
- True laptop safe
- Unique modular construction for easy upgradeability.

For other features, please see the comparison chart on page 10-11 and page 15 for dimensions.

A wide range of RFID (contact less) carriers

Elsafe offers a wide range of RFID carriers that are especially designed for different applications (for your guests or for your VIP guests) and gives you the opportunity to enhance your guests' experience at your hotel.

Typical Hotel application:

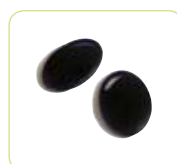
Guests: Low cost guest keycards.
 VIP guests: Keyfobs and NFC cell phones

Typical Resort & spa application:

Guests: Wristbands.
 VIP guests: Wristbands, keyfobs or NFC cell phones.



Low cost guest keycards



Keyfobs



Wristbands



NFC Cell phone

Xtra by Elsafe

The affordable choice for in-room security.

When it comes to guestroom security, Elsafe has always been the choice of hoteliers around the globe. Now we've made that choice even easier, with the Xtra by Elsafe series – advanced security at an affordable price.

With five distinctive security safe models to choose from, this exciting new series features sleek, classic styling; advanced digital electronics; solid steel construction; a proprietary quick-change battery system; anti-tamper labyrinths; and well-known Elsafe reliability.

Xtra

by Elsafe®



XA 27, 43 and 50



XD 13 Drawer Safe



XW 13 On-wall safe



XA 10 In-wall safe



XA 70 Floor safe



The Xtra series includes the industry's leading audit trail system and Elsafe's convenient handheld SafeLink controller. All models are designed to fit as easily into your budget as they do into your guestrooms. With our unparalleled security features and undisputed reputation as the industry leader, there is simply no smarter solution than Elsafe.

Standard features:

- Industry-leading audit trail
- 4 digit guest code and digit display
- Outside battery change
- Spring-loaded door
- ADA compliant telephone-style keypad

For other features, please see the comparison chart on page 10-11 and page 15 for dimensions.

Affordable
Affordable

	COMPARISON CHART - Features	Infinity Digital	Infinity Magnetic Stripe	SENTINEL II Series
1	UL-Listed	Yes	Yes	Yes.
2	Upgradeable	Yes	Yes	Yes
3	Reprogrammable configuration	Yes	Yes	Yes
4	Support IR communication	Yes	Yes	Yes
5	Power supply	5 LR 14/C cells	5 LR 14/C cells	5 LR6/AA cells
6	Power options	Mains 110V - 240V power operation and 5 LR6/AA cell backup batteries.	Mains 110V - 240V power operation and 5 LR6/AA cell backup batteries.	None
7	Outside battery change	Optional	Optional	Yes
8	Audit trail	Yes	Yes	Yes
9	Audit trail print-out	Yes	Yes	Yes
10	Memory	Flash-Memory	Flash-Memory	Flash-Memory
11	Locking method	Shut & lock push button or auto close	Shut door and swipe card to lock	RFID: Shut & Lock with the unique guest RFID room key Digital: Shut & Lock push button
12	Locking mechanism	Interlocking deadbolt mechanism	Interlocking deadbolt mechanism	Interlocking deadbolt mechanism
13	Keyboard	ADA-compliant	No	RFID: No Digital: ADA compliant telephone keypad
14	User operation	4-digit or 6-digit code	Card	RFID: Guests' unique RFID room key Digital: 4 digit code
15	LED display	Yes	No	Yes
16	Backlit keypad option	No	No	Yes
17	Confirmation buzzer	Yes	Yes	No
18	Service unit	SafeLink	SafeLink	PinKey PLUS & SafeLink
19	Door construction	One-piece cold pressed	One-piece cold pressed	One-piece cold pressed
20	Anti-tamper labyrinth	Yes	Yes	Yes
21	Anti-tamper switch option	Yes	Yes	No
22	Spring loaded door	Yes	Yes	Yes
23	Laptop compatible	Yes, up to 15"	Yes, up to 15"	Yes, up to 17" in SA 49
24	Internal power outlet option	Yes	Yes	Yes
25	Inside light option	Yes	Yes	No
26	Inside carpet	Yes	Yes	Yes
27	Color option	3 choices for front panel and door frame (grey, blue, burgundy)	No	No
28	Rental system option	Yes	Yes	Yes

	Xtra XA 27, 43 and 50	Xtra XA 70 Floor Safe	Xtra XD 13 Drawer Safe XW 13 On-wall safe	Xtra XA 10 In-wall safe
1	No	No	No	No
2	Yes	Yes	Yes	Yes
3	Yes	Yes	Yes	Yes
4	Yes	Yes	Yes	Yes
5	5 LR6/AA cells	5 LR6/AA cells	5 LR6/AA cells	5 LR6/AA cells
6	None	None	None	None
7	Yes	Yes	Yes	Yes
8	Yes	Yes	Yes	Yes
9	Yes	Yes	Yes	Yes
10	Flash-Memory	Flash-Memory	Flash-Memory	Flash-Memory
11	Push button	Push button	Push button	Push button
12	18 mm solid steel bolt	18 mm solid steel bolt	18 mm solid steel bolt	18 mm solid steel bolt
13	ADA-compliant	ADA-compliant	ADA-compliant	ADA-compliant
14	4 digit code	4 digit code	4 digit code	4 digit code
15	Yes	Yes	Yes	Yes
16	Yes	Yes	Yes	Yes
17	No	No	No	No
18	PinKey & SafeLink	PinKey & SafeLink	PinKey & SafeLink	Pinkey & SafeLink
19	Plain door	Plain door	Plain door	Plain door
20	Yes	Yes	Yes	Yes
21	No	No	No	No
22	Yes	Yes	Yes	Yes
23	Yes, up to 17" in XA 50	Yes, up to 17"	Yes, up to 14"	Yes, up to 17"
24	Yes	No	No	No
25	No	No	No	No
26	Yes	Yes	Yes	Yes
27	No	No	No	No
28	Yes	Yes	Yes	Yes



Service units

Easy management

The simplest and most secured system for managing your in-room safes - in the palm of your hand!

SafeLink

Elsafe's SafeLink handheld system brings simplicity and security to hotel safe management.

Total control in the palm of your hand

SafeLink requires unique user id's for all users to access SafeLink software. Thus, enabling you to securely override locked safes, program safes, print and read event logs superior to masterkey or mastercode overrides.

Set up all your hotel's safes in minutes

Using your SafeLink unit and a simple connector cord or infrared communication, you can set up safes, securely override accidentally locked safes, and download safe audit trail information with just a few clicks.

Intuitive and easy to use

Touch screen Windows® PocketPC software. All commands and options are simple to select with the user-friendly, intuitive buttons on the handheld unit's high visibility touch screen.

Highly protected access

4 different user levels and up to a 1,000-staff capacity. Every member of your staff receives a personal alphanumeric code during set-up to identify them in the system.

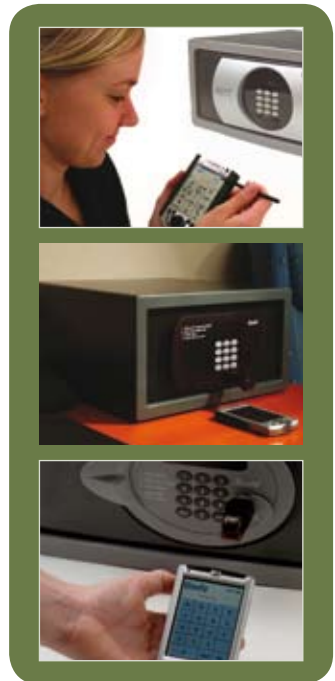
Fully-featured staff audit trail

Our audit trail is unique and you should not expect less.

Your SafeLink will maintain a complete record of up to 1,000-staff operations, providing the industry's most detailed report.

Reports include emergency openings for all safes, which staff member has used the SafeLink, what operations have been performed, and at what time.

Reports can be printed out or viewed on screen at any time.



Statistics and hotel information is always shown in the audit trail.

All events are listed with exact time and date.

Change of time and date is logged.

All incorrect guest codes are listed. This might unveil unfaithful staff members trying to guess codes.

The guest has entered the code but forgotten to press the lock button.

The Elsafe audit trail can be printed in the room while the guest is present. There is even a field for signature at the bottom.

```

Hotel name: World Hotel
Hotel ID: 00008246
Room No.: 0123
Safe Model: Infinity
Serial No.: 4.800.002
Last Service Open: 23.08.03 01:50 Bob Leash
Last tamper: Never
Operation hours: 45
No. of Lockings: 7
No. of Serv. Openings: 2
Readout time: 24.08.03 15:17

24.08.03 15:17 Locked
24.08.03 15:17 Unlocked
24.08.03 15:17 Locked
24.08.03 15:17 Door Time-out
24.08.03 15:17 Time-out
24.08.03 15:17 Logoff
24.08.03 15:16 New Date/Time
23.08.03 01:50 Old Date/Time
23.08.03 01:50 Service Opened
23.08.03 01:50 Logon
ID: Bob Leash
23.08.03 01:49 Incorrect Guest Code
Code: 7446
23.08.03 01:49 Incorrect Guest Code
Code: 6756
23.08.03 01:49 Incorrect Guest Code
Code: 7656
22.08.03 16:31 Locked
22.08.03 16:30 Unlocked
22.08.03 12:20 Locked
22.08.03 12:19 Unlocked
22.08.03 08:31 Locked
22.08.03 08:27 Logoff
22.08.03 08:27 Service Opened
22.08.03 08:27 Logon
ID: Johnny Olden
22.08.03 08:26 Five Incorrect Codes
22.08.03 08:26 Incorrect Guest Code
Code: 4444
22.08.03 08:26 Incorrect Guest Code
Code: 3333
22.08.03 08:26 Incorrect Guest Code
Code: 2222
22.08.03 08:25 Incorrect Guest Code
Code: 1111
22.08.03 08:25 Incorrect Guest Code
Code: 0000
21.08.03 16:16 Locked
21.08.03 16:15 Unlocked
21.08.03 08:35 Locked
21.08.03 08:34 Time-out
21.08.03 08:33 Logoff
21.08.03 08:33 Service Opened
21.08.03 08:33 Logon
ID: Johnny Olden
21.08.03 08:30 Tamper Activated
    
```

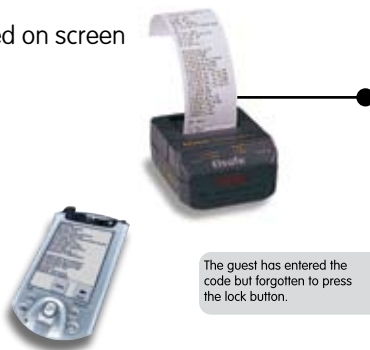
The last service opening can never be deleted from the audit-trail.

User did not close safe door properly when trying to lock it. Safe could therefore not lock and returned to open position.

Identification of the person using the SafeLink, with full name.

After five different incorrect guest codes the safe goes into a countdown. Then it can either be opened with the SafeLink during the countdown or opened with user code after thirty minutes.

If the back-cover has been removed and the safe prepared for future crime, this is logged*.



Service
Service

Hotel Signature: _____
 Guest Signature: _____

* If anti tamper function is applicable

SafeLink features:

- A complete security management solution.
- Compatible with Infinity, Sentinel and Elsafe's Classic and most earlier safes.
- Fast and intuitive Windows® PocketPC based software.
- Pocket PC is compatible with both safes and locks.
- Simple, high level password protection.
- Detailed 'safe event' audit trail from all compatible safes.
- 1,000-'SafeLink event' audit trail.
- Memory card for instant backup and restore.
- Audit trail displays on screen, or prints direct from infrared printer.
- Wireless Infrared or optional cable connection between SafeLink and safe.
- Proven reliability and support from the world's leading in-room safe manufacturer.

PinKey PLUS

The compact and powerful tool to manage your day-to-day safe operations.

The PinKey PLUS is an electronic PIN-code protected, non-resident masterkey to securely override Elsafe in-room safes. For added security, each user needs a personal valid PIN code to securely override the safe.

The PinKey PLUS admin software allows you to add, edit and remove PinKey PLUS users and their pin code in order not to compromise security and manage your staff. PinKey PLUS makes it possible to read out and print the event log from both the safe and the PinKey itself.

The PinKey is the ideal combination for daily management and complements your Safelink.

PinKey PLUS features.

- Secure, easy-to-use and convenient service openings.
- Pin code protected service openings.
- Ideal as a complement to SafeLink in larger properties.
- PinKey PLUS controls up to 25 individual staff users.
- Each user is individually identified.
- Use of PinKey is recorded in safe audit trail.
- Downloads safe audit trail.



Placement solutions

Several options - endless choices



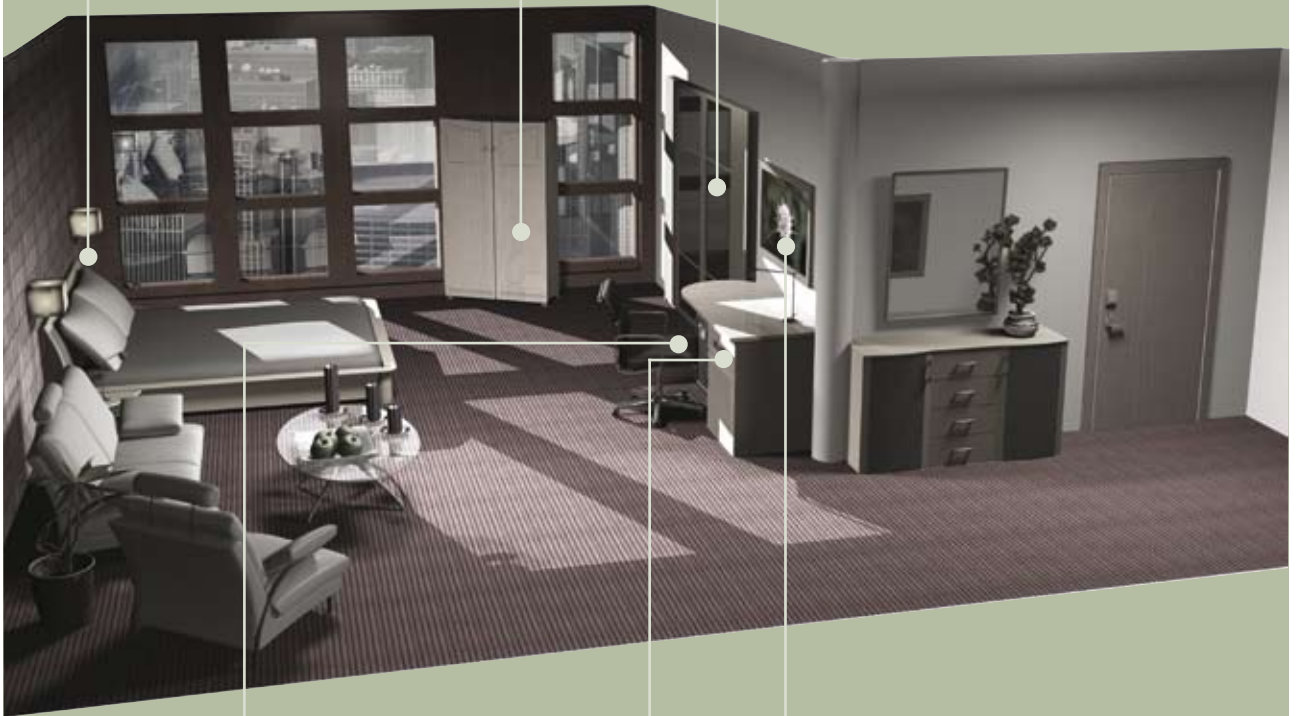
ON-WALL



SHELF



CLOSET



FLOOR

DRAWER










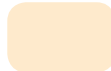


IN-WALL



Placement
Solutions

Additional Information

Colors

	Standard Color A ⁽¹⁾ (Infinity, SENTINEL II & Xtra only)		Standard Color B ⁽²⁾ (In-wall safe only)		Infinity Color Option ⁽³⁾ (Infinity Digital only)		Infinity Color Option ⁽³⁾ (Infinity Digital only)	
Body color:	RAL 7021 Black Grey		RAL 1015 Beige		RAL 7021 Black Grey		RAL 7021 Black Grey	
Frame color:	RAL 7040 Grey		RAL 1015 Beige		RAL 5003 Blue		RAL 3007 Burgundy	
Safe color combination:								

(1) Standard color A for Infinity, SENTINEL and Xtra in-room safe models.

(2) Standard color B is only available for In-wall safe.

(3) Optional color choice for Infinity Digital with upcharge.

Dimensions

		Infinity by Elsafe®			SENTINEL II by Elsafe®		
		Infinity 25	Infinity 41	Infinity 49	Sentinel II 25	Sentinel II 41	Sentinel II 49
External dimensions (h/w/d)	mm inches	202/435/251 7 ^{7/8} /17/9 ^{7/8}	202/435/413 7 ^{7/8} /17/16 ^{1/4}	202/435/494 7 ^{7/8} /17/19 ^{1/2}	206/437/260 8 ^{1/8} /17 ^{3/16} /10 ^{3/16}	206/437/421 8 ^{1/8} /17 ^{3/16} /16 ^{5/8}	206/437/502 8 ^{1/8} /17 ^{3/16} /9 ^{13/16}
Internal dimensions (h/w/d)	mm inches	196/428/154 7 ^{11/16} /18 ^{7/16} /6 ^{1/16}	196/428/315 7 ^{11/16} /18 ^{7/16} /12 ^{3/8}	196/428/396 7 ^{11/16} /18 ^{7/16} /15 ^{9/16}	196/428/168 7 ^{11/16} /16 ^{13/16} /6 ^{9/16}	196/428/330 7 ^{11/16} /16 ^{13/16} /13	196/428/411 7 ^{11/16} /16 ^{13/16} /16 ^{3/16}
Door dimensions (h/w)	mm inches	148/320 5 ^{3/4} /12 ^{9/16}	148/320 5 ^{3/4} /12 ^{9/16}	148/320 5 ^{13/16} /12 ^{5/8}	148/320 5 ^{13/16} /12 ^{5/8}	148/320 5 ^{3/4} /12 ^{9/16}	148/320 5 ^{13/16} /12 ^{5/8}
Internal volume	liters cu ft	12,9 0,46	26,4 0,93	33,2 1,17	14,1 0,50	27,7 0,98	34,5 1,22
Weight	kg lb	11,6 23,8	15,1 33,3	17,4 38,4	11,6 23,8	15,1 33,3	17,4 38,4

Xtra by Elsafe®		XA 27	XA 43	XA 50	XA 70 Floor safe	XD 13 - XW 13 ⁽¹⁾ Drawer safe On-wall safe ⁽¹⁾	XA 10 In-wall safe
External dimensions (h/w/d)	mm inches	193/356/271 7 ^{1/2} /14/10 ^{11/16}	193/356/433 7 ^{1/2} /14/17 ^{1/16}	193/356/512 7 ^{1/2} /14/20 ^{3/16}	536/355/458 21 ^{1/8} /14/18 ^{1/16}	132/400/350 5 ^{3/16} /15 ^{3/4} /13 ^{3/4}	468/416/77 (+94 inside wall) 18 ^{1/2} /16 ^{3/8} /3 ^{1/16} (+3 11/16)
Internal dimensions (h/w/d)	mm inches	188/351/196 7 ^{3/8} /13 ^{3/4} /7 ^{11/16}	188/351/358 7 ^{3/8} /13 ^{3/4} /14 ^{1/8}	188/351/436 7 ^{3/8} /13 ^{3/4} /17 ^{3/16}	500/349/371 19 ^{11/16} /13 ^{11/16} /14 ^{5/8}	63/397/347 2 ^{1/2} /15 ^{5/8} /13 ^{3/16}	400/357/96-142 (min-max) 15 ^{3/4} /14 ^{1/16} /3 ^{13/16}
Door dimensions (h/w)	mm inches	140/295 5 ^{1/2} /11 ^{5/8}	140/295 5 ^{1/2} /11 ^{5/8}	140/295 5 ^{1/2} /11 ^{5/8}	455/220 17 ^{5/16} /8 ^{11/16}	340/225 13 ^{6/16} /8 ^{14/16}	400/288 15 ^{12/16} /11 ^{5/16}
Internal volume	liters cu ft	13 0,46	24 0,84	28,5 1,01	66 2,33	9 0,32	19 0,67
Weight	kg lb	7,8 16,8	10 21,6	11,6 25,6	36,2 79,8	14 30,9	21 46

(1) The internal and external dimensions for Xtra On-Wall safe are reversed from the dimensions mentioned in the table i.e. 350/400/132.



At VingCard Elsafe, We listen

For more information, please contact:



Europe/Middle East/Africa:
E-mail: emea@vcegroup.com
Phone: +47 69 24 51 00

North America:
E-mail: noram@vcegroup.com
Phone: +1 972 907 2273

Asia/Pacific:
E-mail: aspac@vcegroup.com
Phone: +65 6748 7227

Latin America:
E-mail: lam@vcegroup.com
Phone: +52 55 36 40 12 00

VingCard Elsafe • info@vcegroup.com • www.vingcard.com • www.elsafe.com

Specifications may change without notice.